



THEMESCENE[®]

HD3000

Video Processing System



Enhanced Video Processing!

The HD3000 is specifically designed to dramatically enhance the image quality of all digital Projectors and TV's. It combines the very latest studio grade video enhancement and colour management with state-of-the-art video switching, scaling and format conversion

At the heart of the HD3000 is Gennum Visual Excellence Processing™ (VXP) technology that provides revolutionary image quality improvement, employing the worlds most advanced image processing algorithms

Staggering, never-seen-before colour management tools unleash the full potential of any display device giving you complete control to render the perfect image

Video switching enables 14 digital and analogue video inputs, including HDMI, Component and SCART RGB to be simultaneously connected, optimised and then converted to a single High Definition HDMI output, simplifying the connections to your display device

Video Enhancement

- True 10bit 4:4:4 broadcast-grade processing architecture
- Content adaptive, per-pixel processing of all video signals
- User customisable gamma curve with 10-bit gamma correction
- Dynamic Contrast Extension
- Sophisticated Edge Enhancement
- Multi-directional edge adaptive processing
- Content adaptive noise reduction and detail enhancement
- Robust inverse 2:2 and 3:2 processing of film-based inputs (including 1080i)
- Multi-directional edge adaptive processing
- Bad edit correction

Colour Management

- 6 colour (R, G, B, C, M, Y), 16 region saturation and tint control

Video switching

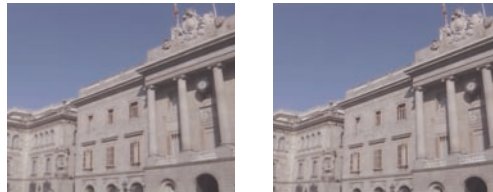
- 14 video inputs
 - 3 x HDMI
 - 2 x Component (3 x RCA)
 - 2 x RGBHV (4 x BNC) Component, SCART RGB
 - 3 x S-video
 - 3 x Composite
 - 1 x VGA

Scaling

- Scale any input signal to match your display – up to 1080p

Directional Interpolation

VXP™ eliminates jaggy artifacts with dynamic directional interpolation.



10-Bit Real Time Processing

VXP™ performs all processing with at least 10-bits accuracy offering superior image precision and over 1 billion colours.



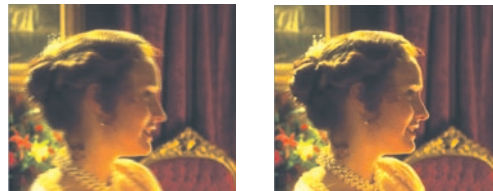
Film Cadence Recovery

VXP™ offers robust, rapid film cadence detection, removing 3:2 / 2:2 film cadences and bad edits



Robust Motion Processing

VXP™ performs intelligent pixel-by-pixel noise adaptive motion detection, allowing optimal interpolation filter selection.



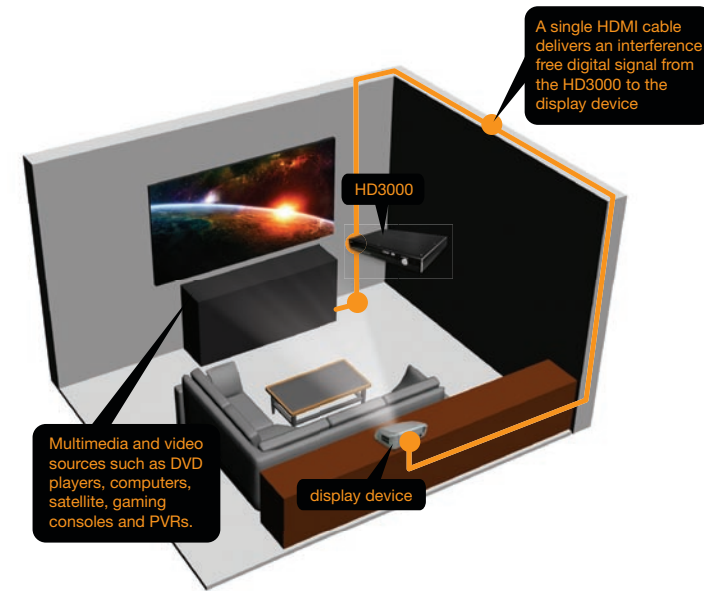
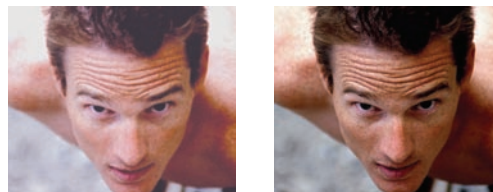
3D Noise Reduction

VXP™ produces the clearest picture while maintaining fine image details.



Detail Enhancement

VXP™ seeks out underlying image detail bringing unprecedented texture, sharpness and clarity to images.



Simple Installation

The HD3000 simplifies Home Cinema installations. Situate next to your video sources and connect to the HD3000. The video signals are optimised and up-scaled before being transmitted, via a single HDMI cable, to your display device

Simple Operation

3 features make getting the best possible image quality easy:

- 1. Ease of use** – Clear intuitive menu's and logical operation make configuration simple
- 2. Demo Mode** – See what you're doing! Demo mode provides a window in the displayed image so you can see in real time what affect the changes you are making are having to the displayed image. With both the processed and unprocessed images visible at the same time you can instantly see how the HD3000 is enhancing your image quality
- 3. ISF Calibration** – Enables a professional to expertly calibrate your system for perfect image quality and then permanently save the configuration. All you need to do is select either the ISF Day or Night setting for perfect image quality every time.

Demo Mode



HD3000
Processed signal

Original signal

Technical Specifications

Specifications	HD3000
Power Supply	Universal AC 100 - 220 volts, 50/ 60Hz
Power Consumption	45w Max, <4.3w Standby
Dimensions (W x D x H)	433 x 285 x 50 mm
Weight	4.2kg

Output Resolutions	48Hz	50Hz	60Hz	72Hz
576p (1024 x 576)	X	✓	✓	✓
1024 x 768	X	✓	✓	✓
1280 x 768	X	✓	✓	✓
1366 x 768	X	✓	✓	X
1080p (1920 x 1080)	✓	✓	✓	X

Input Resolutions	
Video	480i, 576i, 1080i, 480p, 576p, 720p, 1080p

Computer	
Analogue	VGA, SVGA, XGA, SXGA, WXGA, 720p
Digital DVI (Via HDMI)	VGA, SVGA, XGA, 720p, 1080p

RS232C & Discrete IR Remote Control

Ideal for Home Automation applications through external controllers and advanced IR remote controls. IR expansion module increases IR range and positioning flexibility



Front Panel



I/O Connectors

Rear Panel



Optoma Europe Limited
 42 Caxton Way,
 Watford Business Park,
 Watford, Hertfordshire,
 WD18 8QZ

Tel: +44 (0) 1923 691800
 Fax: +44 (0) 1923 691888

www.themescene.tv



ThemeScene® is a registered trademark of Optoma Europe Ltd. TrueVivid™ and Image AI™ are registered trademarks of Optoma Technology, Inc. TrueVision™ and BrilliantColor™ are trademarks of Texas Instruments. DLP™ and the DLP logo are registered trademarks of Texas Instruments. Visual Excellence Processing™ and VXD™ are trade marks of Gennum Corporation. ISF™ and ISFccc™ are trade marks of the Image Science Foundation. All other product names and company names used herein are for identifications purposes only and may be trademarks or registered trademarks of their respective owners. Errors and omissions excepted, all specifications are subject to change without notice.

