

HD25
DLP® Projector

Ultimate Full 3D Projector



Bring movies and games to life with the HD25 Full HD 1080p 3D projector.

Enjoy your favourite TV shows, sports and action-packed games in the ultimate home entertainment experience. Incorporating a built in speaker, you can conveniently listen to your movies without the hassle of connecting external speakers. You can even project up to a 300" image to create an extra-large screen for the true cinema experience, right in your own home.

Utilising the latest DLP® technology, the HD25 delivers exceptional Full HD 1080p and immersive 3D visuals.

Producing a stunningly bright image with perfectly balanced vivid colour and crystal clarity the HD25 provides the exceptional light and shade detail only possible with a high contrast projector.

Full HD 1080p

Sharper more detailed projection with 1920 x 1080p pixels, perfect for watching Blu-ray movies without downscaling or compression.



Without

With

Full 3D

Using the inherent speed of DLP technology, The Optoma HD25 Full 3D projector can display true 3D content from almost any 3D display device, including 3D Blu-ray, PS3, Xbox and Sky3D.



Dynamic Black

Dynamic black smoothly adjusts the lamp output automatically, based on the brightness information of each frame; to create a stunning 20,000:1 contrast ratio. Bright scenes are crisp and clear, while dark scenes remain detailed with deep blacks which gives exceptional light and shade detail.



24p

Most movies are shot at 24 frames per second. To preserve the purity of the original image the HD25 can accept High Definition sources at 24 frames per second and so to display movies exactly as the director intended.



Amazing Colours

The HD25 incorporates BrilliantColor™ multi-colour processing technology to bring stunning, vibrant colour to your screen. Using six separate primary and secondary colours to produce a new level of colour performance and control; BrilliantColor™ increases colour brightness by up to 50% over other technologies to create accurate true to life images. You can even fine tune colours for ultimate precision.

BrilliantColor™



Without

With

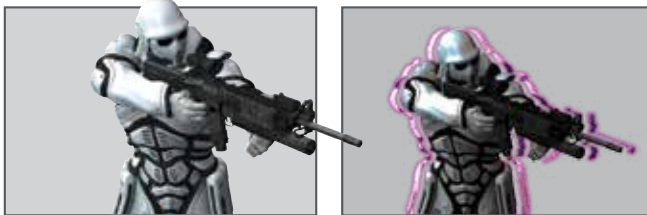
Color Guarantee

We are so confident that the HD25 image colour quality will remain as good as the day you bought it that Optoma will guarantee it for five years.



DLP® Technology – The greatest 3D home cinema experience!

Create the most vivid & compelling 3D experience available anywhere. Unlike competing technologies, DLP from Texas instruments uses millions of tiny mirrors to maximise the available light output and high contrast while the inherent speed completely eliminates crosstalk.

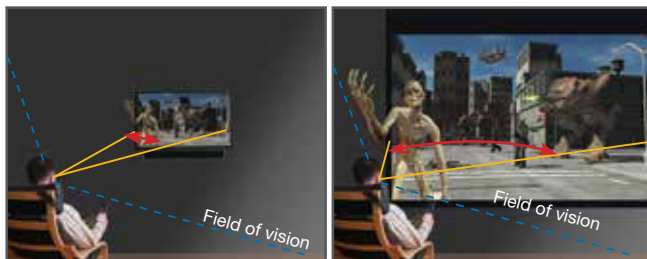


DLP®

Other

Why use a projector for 3D?

It is a widely accepted fact that the bigger the image, the greater the 3D effect - for the best results it is essential to fill your field of vision, without having to be too close to the screen. Even a huge 50" TV can only create a window on the 3D world, whereas the immersion & excitement created by a massive 150" projection screen makes you feel like you are part of the action!



50" 3D Television

150" Optoma Projector



3D Movies:

Now that all the latest 3D movies have arrived on Blu-ray 3D™ you can enjoy the same jaw-dropping 3D cinema experience at home, now in fantastic 1080p Full High definition.

3D Sports:

Couldn't get tickets for the big match? - The HD25 brings the big picture home like never before. With more matches broadcast in 3D every season, you'll never miss the great moments in sporting history and you can re-live them time after time as though you were actually there.



3D Gaming:

Set your sights on the HD25 for the greatest 3D gaming experience. With an impeccable response time you can line-up the perfect shot while sniper-rounds whizz past you; watch burning ships zoom off into the distance; dodge axe-wielding zombies lurching out of the screen – the possibilities are endless. Combine this with active-motion gaming for the closest thing to your very own virtual reality suite.



Bring movies and games to life with the HD25 Full HD 1080p 3D projector.

Powerful Audio

Complete your home cinema experience with the powerful on-board 10W speaker. Offering exceptional sound quality the HD25 is easy to set up without the need for costly external speakers.



Long Lamp Life

The new lamp technology incorporated into the HD25 extends lamp life up to an incredible 6000 hours. If you watch a two hour movie every day then typically the lamp will last for over 8 years.

The only thing left is the glasses...

For that seamless 3D experience, use our second generation wireless 3D glasses.

Developed in parallel with our "Full 3D" projectors, the ZF2100 system & glasses are optimised to provide you with higher contrast & brighter images than ever before, while eliminating tedious issues with emitter placement, limited range and potential interference commonly experienced when using Infra-red.

Fully rechargeable, our ZF2100 glasses give you the peace of mind that comes with knowing both installing and using them will be hassle free.



HD25

HD25 Specifications Highlights		
Full HD		Native 1080p (1920 x1080)
Brightness ¹		2000 ANSI Lumens
Dynamic Contrast		20,000:1
Audible Noise		26dB
Throw Ratio		1.5 - 1.8
Zoom		1.2x
Lamp Life ²		6000 hours (Eco mode)
Connections	Inputs	2x HDMI v1.4a 3D, 2x VGA (PC/YPbPr), Composite Video, 2x Audio In 3.5mm stereo socket
	Output	VGA, Audio Out 3.5mm stereo socket, 3D-Sync Out (3-Pin VESA)
	Control	RS232
	Speaker	10W
2D Compatibility		1080p, 1080i, 720p PAL, NTSC, SECAM
3D Compatibility		Side-by-Side:1080i50 / 60, 720p50 / 60 Frame-pack: 1080p24, 720p50 / 60 Over-Under: 1080p24, 720p50 / 60
3D Viewing		Requires ZF2100 system - available separately
Dimensions		324 x 234 x 97mm
Weight		3.1Kg
Warranty		Warranty may vary by country. Please see or ask your local supplier for details
Part Number		95.8RV01GC1E
EAN Number		5060059047574
In the box		Lens Cover, AC Power Cord, Back-lit IR Remote Control with Batteries, Quick Start Card, Warranty Card



For full specifications please visit the website at: www.optoma.eu



HD25 Connections

- 1 USB Service
- 2 HDMI 1 (1.4a 3D)
- 3 HDMI 2 (1.4a 3D)
- 4 Composite Video
- 5 VGA 1 In
- 6 VGA 1 Out
- 7 Audio In (VGA 1/2)
- 8 Audio Out
- 9 3D-Sync
- 10 VGA 2 In
- 11 RS232
- 12 Audio In (Video)
- 13 Power
- 14 Kensington™ Lock

Projection Distance (m)	Min Diagonal Image Size (m)	Max Diagonal Image Size (m)	Max Diagonal Image Size (inch)
2.00	1.27	1.53	60.23
3.00	1.91	2.29	90.34
4.00	2.55	3.06	120.46
5.00	3.19	3.82	150.57
6.00	3.82	4.59	180.68

Optoma Accessories	
Projector Mounts	
OCM818W OCM818B OCM815B OCM815W	 Universal ceiling mount with/without extension pole (adjustable height 290mm–810mm/140 mm) available in black and white.
Screens	
	Optoma screens use the highest grade of screen fabrics to reflect the truest, most vivid and dynamic images. Please visit www.optomaeurope.com



We know that improving our products is the best way to reduce our impact on the environment. That's why at Optoma, we design our products to have a long usable life, use fewer materials, ship with the minimum packaging and be free of all possible toxic substances. Naturally, energy efficiency and being recyclable are built in at the design stage. With each new product, we strive towards minimising our environmental impact. For full details of Optoma Project Green please visit our website.



Optoma Europe Limited 42 Caxton Way, Watford Business Park, Watford, Hertfordshire. WD18 8QZ
Tel: +44 (0) 1923 691800 Fax: +44 (0) 1923 691888
www.optoma.eu



¹Brightness will vary depending on selected projector mode, environmental conditions and usage. As is common with all lamp based projectors, brightness will decrease over the lamp lifetime. ²Actual lamp life may vary due to different environment conditions and usage. For more information please visit our website. DLP®, and the DLP logo are registered trademarks of Texas Instruments. All other product names and company names used herein are for identifications purposes only and may be trademarks or registered trademarks of their respective owners. All images of products are for representation purposes only. Whilst every care is taken to provide accurate images of our products, actual products may differ slightly. Some product images may have been digitally altered by us to add an Optoma logo to the front panel. Optoma reserves the right to amend or alter actual product or product images without notice. Some images may have been simulated. Errors and omissions excepted, all specifications are subject to change without notice. Copyright © 2013, Optoma Europe Ltd.