

## GT750-XL

The **Ultimate**  
**3D Gaming**  
Projector



HD Ready  
720p

**Full 3D**  
720p

## ■ GT750-XL

# Join the Revolution

Prepare yourself for life-size 3D games and movies! Designed for use with the latest 3D consoles and Gaming PCs the Optoma GT750-XL home entertainment projector, delivers this massive 3D experience right into your own home; and with one pair of ZD201 glasses included in the box, the GT750-XL is everything you need to get started on some intense 3D gaming sessions...right away!



### Full 3D...HD Ready

With direct support for Blu-ray 3D™ players, 3D broadcast signals like Sky3D and 3D games from the Sony® PS3 & Microsoft Xbox 360, the GT750-XL generates huge, greater than 100", 3D projected images to create a fantastically immersive experience that is just not possible with the small screen of a 3D TV.



### Huge Images in Small Spaces

The GT750-XL utilises a special lens to give you a 120" image from less than 2m away; perfect for shadow-free gaming on your Nintendo Wii, Xbox Kinect & PlayStation Move. Alternatively, use the extra-bright 3500 Lumens for an extra-large screen - Home Cinema with a 5m screen is an awe-inspiring experience of truly phenomenal proportions.



### Thumping Audio

With powerful on-board 10 Watt stereo speakers, the GT750-XL is the ultimate solution for portable gaming or impromptu film screenings at a friend's house. Easily hook it up to your subwoofer to add that extra rumble essential for the greatest home cinema experience; feel every explosion like you are part of the action.



### Lights on Entertainment

The GT750-XL produces fantastic images even when the lights are on. Designed to be used in the same way as your conventional TV, the high brightness GT750-XL can be used for television and film watching or playing the latest motion-controlled games without even dimming the lights.



# GT750-XL

## Immerse yourself in the action

Unlike competing technologies, DLP® from Texas instrument uses millions of tiny mirrors to maximise the available light output, while the inherent speed & high ANSI contrast work in perfect harmony; eliminating crosstalk, to create the most vivid & compelling 3D experience available anywhere.

DLP®



Other



### 3D Gaming:

Set your sights on the GT750-XL for the greatest 3D gaming experience. Line-up the perfect shot while sniper-rounds whizz past you; watch burning ships zoom off into the distance; dodge axe-wielding zombies lurching out of the screen – the possibilities are endless. Combine this with active-motion gaming for the closest thing to your very own virtual reality suite.



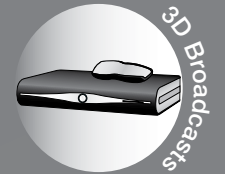
### 3D Movies:

Now that all the latest 3D movies have arrived on Blu-ray 3D™ you can enjoy the same jaw-dropping 3D cinema experience at home, now in fantastic High definition.



### 3D Sports:

Couldn't get tickets for the big match? - The GT750-XL brings the big picture home like never before. With more matches broadcast in 3D every season, you'll never miss the great moments in sporting history and you can re-live them time after time as though you were actually there.

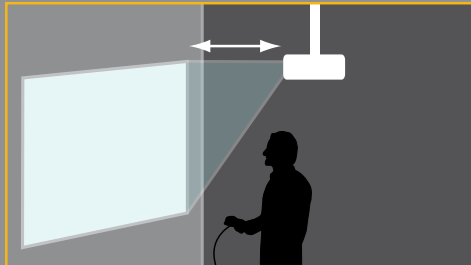


# Get moving

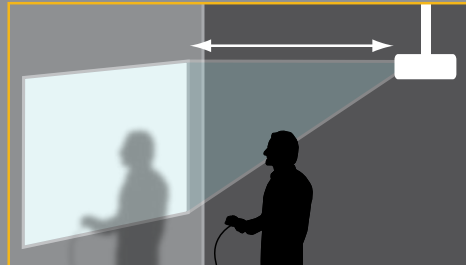
## Shadow free gaming

With the advent of motion controlled gaming from the Playstation®3 Move, Xbox 360 Kinect and of course the Nintendo Wii, gamers need, more than ever, to be on their feet. In the past, this might have been a problem, as some projectors were positioned behind the player causing an on-screen shadow. Now, using a special “short-throw” lens developed by Optoma, the GT750-XL can be placed much closer to your screen, eliminating the shadow that might have made your motion-controlled gaming all but impossible.

GT750-XL



Normal Projector



## 3D motion-controlled gaming

Not only do new titles for Playstation®3 Move and Xbox 360 Kinect often support motion-control, but many are in 3D too! Imagine being able to control your avatar not only using “Kinect” or PS3™ Move but in stunning 3D as well. Well now you can enjoy this incredible 3D motion-controlled experience, for the closest thing to your very own virtual reality suite.

**Full 3D**  
720p

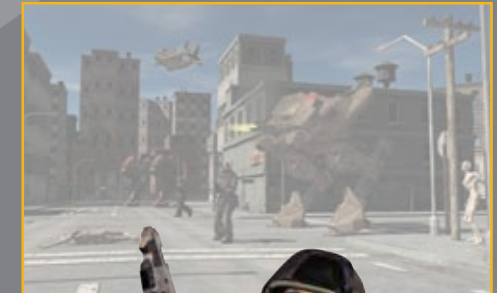
## Lights on-gaming

Traditional home cinema projectors are great when you have a controlled, dark environment for watching films. When the lights go on to play motion controlled games with the PS3™ Move, Xbox 360 Kinect or Wii, the image may suffer, appearing to be washed out and lacking definition. The GT750-XL has 3500 lumens of brightness providing enough light for a Fantastic gaming experience even with the lights on.

GT750-XL image with the lights on



Traditional Home Cinema projector with the lights on



# GT750-XL

GT750-XL Specifications Highlights	
HD Ready	720p (1280 x 800 Native)
ANSI Contrast	300:1 ANSI
Dynamic Contrast	3000:1
Audible Noise	27dB Standard mode
Brightness <sup>1</sup>	3500 ANSI Lumens
Lamp Life <sup>2</sup>	4000 Hours (ECO mode)
Connections	2x HDMI (v1.4a 3D support), VGA (Component\ PC), S-video, Composite, L/R RCA Audio-In, 3.5mm Audio-Out, RS232, 3D Sync Out
2D Compatibility	1080p24/50/60, 1080i50/60 720p50/60/120, PAL, NTSC, SECAM
3D Compatibility	Side-by-Side:1080i50, 1080i60 Frame-pack:1080p24, 720p50, 720p60 Over-Under: 1080p24, 720p50, 720p60
3D Viewing	1 pair ZD201 DLP-Link shutter-glasses included. Additional pairs are available separately.  (The Optoma 3D-RF System/Glasses are also supported - available separately.)
Dimensions	324 x 234 x 97mm
Weight	2.97 Kg
Warranty	Warranty may vary by country. Please see or ask your local supplier for details
EAN Number	5060059046058

For full specifications please visit the website at: [www.optoma.co.uk](http://www.optoma.co.uk)

ZD201 3D Glasses Specifications	
3D Refresh rate	120Hz (60Hz / eye)
Dimensions (W x D x H)	172 x 166 x 40 (mm)
Weight	50g
Power	1x CR2032 battery
Battery Life	Up to 70 Hours
Range	Up to 20M (Dependent on projected Image)
Operating Conditions	Operating: 5°C - 45°C
Storage Humidity	≤90%

## ZD201 3D Glasses



## Distance Table

Projection Distance (m)	Horizontal Image Size (m)	Vertical Image Size (m)	Diagonal Image Size (m)	Diagonal Image Size (inch)	Image Offset (m)
1.00	1.39	0.87	1.64	64.48	0.11
2.00	2.78	1.74	3.28	128.96	0.22
3.00	4.17	2.60	4.91	193.45	0.32



## Connections

- 1 VGA In - (Component via adapter)
- 2 HDMI (V1.4a 3D & audio supported)
- 3 S-Video
- 4 Composite Video
- 5 Audio Out - 3.5mm Jack
- 6 3D Sync Out (VESA)
- 7 RS232
- 8 Audio In L/R RCA
- 9 Kensington™ Lock
- 10 Security Bar

## Back-lit Remote



Optoma Europe Limited 42 Caxton Way, Watford Business Park, Watford, Hertfordshire. WD18 8QZ  
Tel: +44 (0) 1923 691800 Fax: +44 (0) 1923 691888  
[www.optoma.eu](http://www.optoma.eu)



<sup>1</sup> "ANSI Contrast" is a recognised contrast measurement technique as described in the standard IEC 61947-1

Copyright © 2011, Optoma Europe Ltd. <sup>1</sup>Brightness and lamp lifetime will vary depending on selected projector mode, environmental conditions and usage. As is common with all lamp based projectors, brightness will decrease over the lamp lifetime. <sup>2</sup>Typical lamp life achieved through testing. Will vary according to operational use and environmental conditions. Xbox 360, Xbox, Kinect & Windows are registered trademarks of Microsoft Corporation in the United States and other countries. Sony® & PlayStation® are registered trademarks of Sony Corporation. Sky is a registered trademark of BSKyB™. All other product names and company names used herein are for identification purposes only and may be trademarked or registered trademarks of their respective owners. Errors and omissions excepted, all specifications are subject to change without notice. DLP®, BrilliantColor™ and the DLP logo are registered trademarks of Texas Instruments. Some images may be simulated.