

## EW1691e

DLP® Projector

- Light and ultra portable – only 1.4kg
- Native WXGA, 2500:1 contrast ratio – ideal with Widescreen & HD sources for sharp detailed images
- Conference room brightness – 3000 ANSI Lumens
- Ideal presentation remote with mouse control & laser pointer
- Rapid power on and shutdown – saving you time & money
- Environmentally friendly design <1W standby mode
- DLP® filter-free design – virtually no maintenance

# Lightweight widescreen projector



HD Ready  
720p



1500  
1080p

## Incredible Brightness from a Portable Widescreen Projector

### Light, bright and beautifully designed

Widescreen and HD Ready; the EW1691e brings together amazing brightness, portability and cutting-edge design in one travel-friendly DLP® projector.

Weighting only 1.4kg with a staggering 3000 ANSI Lumens, perfect for large rooms and light enough to be taken on the road. Ideally partnered with a widescreen notebook and HD sources, to deliver bright vivid presentations and videos.

Small doesn't mean that you miss out on specification though, this projector still comes with an HDMI input for digital clarity, filter-free, low maintenance design and our unique 5 year Optoma Colour guarantee.

### STAGGERING BRIGHTNESS

Project in brightly lit locations with the powerful 3000 ANSI Lumens to define the smallest screen details clearly. Your audience will experience the EW1691e remarkable picture in almost any lighting situation.

### TRUE WXGA RESOLUTION

The EW1691e is the perfect companion for widescreen laptops. Your presentations will appear as sharp and detailed as they do on your widescreen laptop in WXGA (1280 x 800). WXGA resolution gives 30% more pixels than XGA.



### TRUE HDMI

Project crystal clear images using the latest HDMI v1.3 input. Hassle-free projection from a widescreen computer/HD source with a single HDMI cable – no need for separate audio cables.



Travelling with a lightweight, EW1691e portable DLP® projector is convenient and hassle-free.

### CARRY BAG

A luxury carry case is provided for you to be able to take the EW1691e anywhere, anytime.



### CUSTOMISED START UP SCREEN

First impressions are important so set the company logo as your start up screen to make that lasting impression.

### FEATURES

- 5 preset picture modes
- Quick keystone correction
- Easy to use on the table or ceiling mounted
- Fully featured remote with mouse control & laser pointer

## AMAZING COLOURS

The EW1691e incorporates BrilliantColor™ technology to produce stunningly bright images with perfectly balanced life-like colours.

## COLOUR GUARANTEE

We are so confident that the EW1691e image colour quality will remain as good as the day you bought it that Optoma will guarantee it for five years.



## VIRTUALLY MAINTENANCE FREE = LOWER TOTAL COST OF OWNERSHIP (TCO)

EW1691e provides lower cost of ownership, longer life and improved reliability. The filter-free projector design does not require regular filter cleaning or filter replacement, saving you time and money.



## ENVIRONMENTALLY FRIENDLY

The EW1691e incorporates energy saving features to conserve power and extend the lamp life:



To achieve the maximum 3000hrs\*\* lamp life time the projector should be operating in STD mode and the shut down timer should be enabled to automatically switch off the projector if it is accidentally left on when no longer required. Enabling the <1W Standby mode will ensure the minimum energy consumption when the projector is not being used.



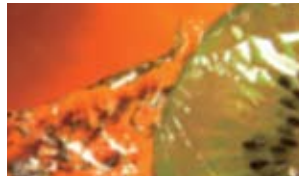
It takes less than 10 seconds for the projector to power up and shutdown, saving both time and energy.

### Image and colour enhancement technologies

**WITH**  
2500:1 contrast ratio



**WITHOUT**  
400:1 contrast ratio

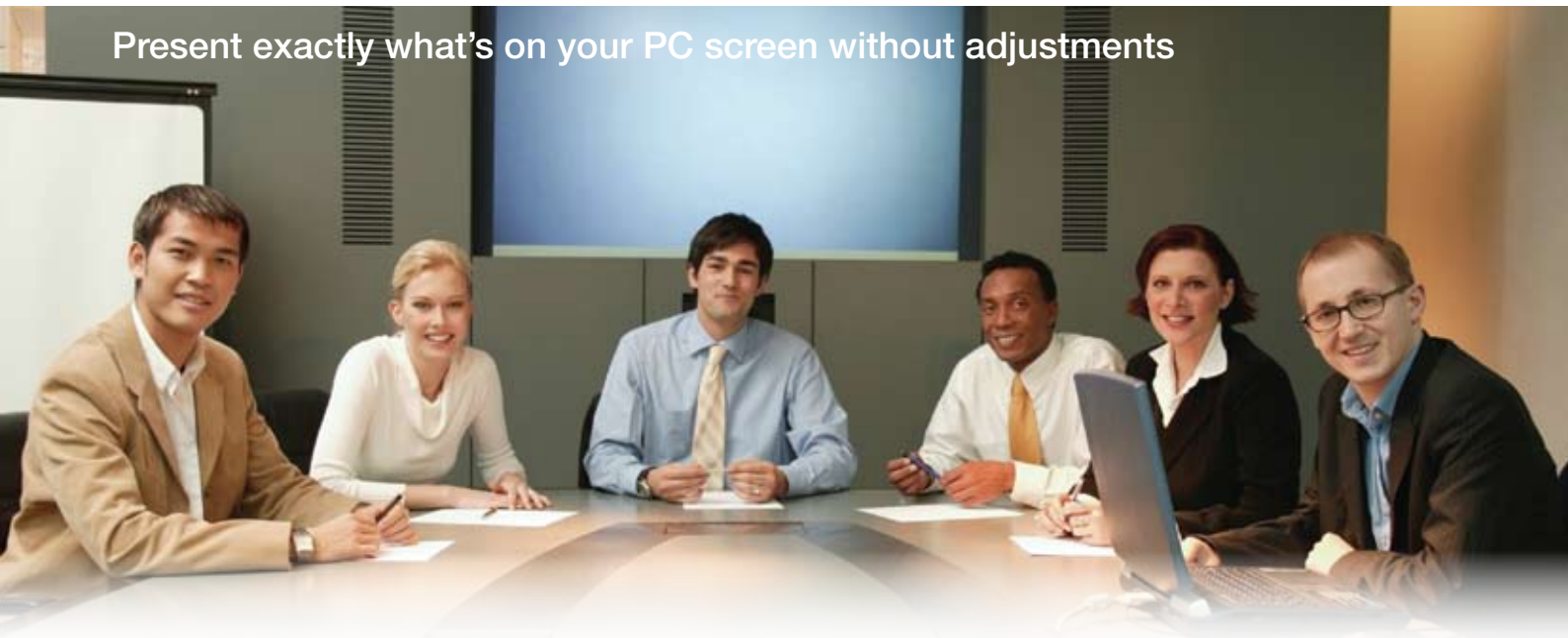


### BrilliantColor™ Technology

Advanced colour processing for bright, vivid, lifelike colour.

\*Simulated Images

Present exactly what's on your PC screen without adjustments



## EW1691E SPECIFICATIONS

Native Resolution	WXGA 1280 x 800
Compressed Resolution	up to UXGA (1600 x 1200)
Brightness	3000 ANSI Lumens
Contrast	2500:1
Noise Level (STD mode)	33dB
Lamp Life	3000/2000 (STD/BRIGHT mode)
Display Technology	Single 0.65" WXGA type A DMD chip
Weight / Dimensions (W x D x H)	1.4 kg / 220 x 178 x 71
Remote Control	Full Function Remote Mouse with Laser and Direct Source selecting
INPUTS:	HDMI (HDCP) - Audio Supported 15 Pin D-Sub VGA (SCART & Component via adaptor) S-Video 4 Pin Mini Din Composite 3.5mm Stereo Jack USB (remote mouse)
Audio	1 x 1W Speaker
Aspect Ratio	16:10 Native, 16:9, 4:3 Compatible
Keystone Correction	± 30° Vertical
On Screen Display	17 Languages: English, German, French, Italian, Spanish, Portuguese, Polish, Dutch, Russian, Finnish, Swedish, Greek, Norwegian/Danish, Hungarian, Czech, Turkish & Arabic
Video Compatibility	PAL SECAM 576i/p, NTSC 480i/p, HD 720p/1080i
Uniformity	80%
Displayable Colours	134.2 Million
Projection Lens	F=2.55 ~ 2.72, f=21.3 ~ 24.5mm, 1.15x Manual Focus
Throw Ratio	1.5 ~ 1.8:1 (Projection Distance:Image Width)
Projection Distance	1.2 - 12m
Image Size	0.79 - 9.43m (30.95" - 371.42") Diagonal 16:10
Horizontal / Vertical Scan Rate	15 - 91.4kHz / 43 - 87Hz
Lamp Type	220W Lamp
Power Supply	100-240V, 50-60Hz with PFC Power Supply
Power Consumption	280W BRIGHT mode < 1W Standby mode 230W STD mode < 1W Standby mode
Operating Conditions	Operating: 5 - 40°C, 80% Humidity (Max), 3000m Altitude (Max)
Security	One Kensington Lock Port, Password Protection
Standard Accessories	Lens Cover, AC Power Cord, VGA Cable, USB Cable, Full Function Remote, Batteries x 2, Soft Carry Bag, Quick Start Guide, CD User Manual, Warranty, WEEE Card
RoHS	Compliant
Lamp Warranty	6 months or 1000 hours - whichever comes sooner
Warranty	Warranty may vary by country. Please see <a href="http://www.optomaeurope.com">www.optomaeurope.com</a> or ask your local supplier for details
Colour Guarantee*	5 Years

## EASY TO USE REMOTE CONTROL

### EW1691e Remote Control

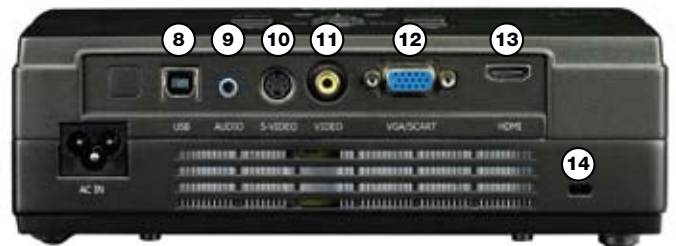
- 1 Laser
- 2 Remote Mouse
- 3 Vertical Keystone Correction
- 4 Volume Control
- 5 Brightness Adjustment
- 6 AV Mute
- 7 Direct Input Source Selection



### EW1691e Connections

- 8 USB (remote mouse)
- 9 Audio In
- 10 S-Video
- 11 Composite
- 12 VGA In - Component & SCART via adaptor
- 13 HDMI (audio supported)
- 14 Kensington™ Lock

## Exceptional Connectivity / Multiple Terminals



Easy to use remote with buttons to change the input sources



### EW1691e Projection Distance 1.2 - 12m (16:10 Aspect Ratio)

Projection Distance (m)	Max. Horizontal Image Size (m)	Min. Horizontal Image Size (m)	Max. Screen Height (m)	Min. Screen Height (m)	Max Diagonal Image Size (m)	Max Diagonal Image Size (inch)	Max. Image Offset (m)
1.20	0.80	0.67	0.50	0.42	0.94	37.14	0.14
2.00	1.33	1.11	0.83	0.69	1.57	61.90	0.23
2.50	1.67	1.39	1.04	0.87	1.97	77.38	0.29
3.00	2.00	1.67	1.25	1.04	2.36	92.85	0.35
4.00	2.67	2.22	1.67	1.39	3.14	123.81	0.47
5.00	3.33	2.78	2.08	1.74	3.93	154.76	0.58
6.00	4.00	3.33	2.50	2.08	4.72	185.71	0.70
7.00	4.67	3.89	2.92	2.43	5.50	216.66	0.82
8.00	5.33	4.44	3.33	2.78	6.29	247.61	0.93
9.00	6.00	5.00	3.75	3.13	7.08	278.56	1.05
10.00	6.67	5.56	4.17	3.47	7.86	309.51	1.17
11.00	7.33	6.11	4.58	3.82	8.65	340.47	1.28
12.00	8.00	6.67	5.00	4.17	9.43	371.42	1.40

For guide purposes only

EP1691e is capable of 4:3 and 16:9 aspect ratio projection. When projecting a 4:3/16:9 image the image sizes, screen height and offset information will differ from the above.

### Optoma Europe Ltd.

42 Caxton Way, Watford Business Park, Watford, Hertfordshire, UK. WD18 8QZ

[www.optoma.eu](http://www.optoma.eu)



\*Optoma guarantees that in normal use, Optoma DLP® colour quality will be indistinguishable from when new. Exclusions: (a) Guarantee is voided if the projector is subject to damage through misuse. (b) Guarantee may be void in industrial or commercial entertainment environments where dust or smoke is excessive (c) Guarantee will not apply if lamp brightness is below 50% due to wear or if the projector is not working due to other faults. (d) Over time worn lamps within all projector types will show a slight colour variance. \*\*Typical lamp life achieved through testing. Will vary according to operational use and environment conditions. Copyright © 2012, Optoma Europe Ltd. All other product names and company names used herein are for identification purposes only and may be trademarks or registered trademarks of their respective owners. Errors and omissions excepted, all specifications are subject to change without notice. DLP®, BrilliantColor™ and the DLP logo are registered trademarks of Texas Instruments. All images of products are for representation purposes only. Whilst every care is taken to provide accurate images of our products, actual products may differ slightly. Some product images may have been digitally altered by us to add an Optoma logo to the front panel. Optoma reserves the right to amend or alter actual product or product images without notice. Some images may be simulated.