








## ES521 DLP® Projector

-  Bright projection – 2700 ANSI Lumens
-  SVGA resolution, 4500:1 contrast ratio for sharp, detailed presentations and graphics
-  Low ownership costs - up to 6000 hrs lamp life
-  Compatible with SCART sources like satellite and cable TV receivers, games consoles and DVD players
-  Quick start up and shut down time
-  Remote control
-  Lightweight and portable, carry bag included

# Ultimate Big Screen Viewing Experience



An ultra-bright 2700L will ensure your presentations and graphics will project clearly even in ambient lighting conditions. Perfect for business and classroom applications, but will easily adapt for use in your home. Convenient carry bag allows you to take the small and stylish ES521 from room to room or on the go.

Hassle-free, long lasting projection with the 6000 hour lamp-life, filter-free low maintenance design combined with our unique Optoma Colour guarantee.

## CLEAR, FOCUSED IMAGES

DarkChip3™ technology from Texas Instruments produces a stunning 4500:1 contrast ratio for pin sharp, crystal clear images - helping you keep an eye on the ball. Crisper whites and ultra rich blacks bring the image to life.



With



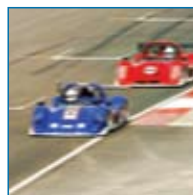
Without

## SMOOTH, SEAMLESS PROJECTION

Even in the fastest moving scenes, the ES521 will project a smooth and seamless image. The rapid response of DLP® technology ensures that the projected movie or video game remains perfect and precise.



With



Without

## AMAZING COLOURS

The ES521 incorporates BrilliantColor™ technology to produce stunningly bright images with perfectly balanced life-like colours. Preset display modes allow you to achieve a perfect image every time.

## COLOUR GUARANTEE

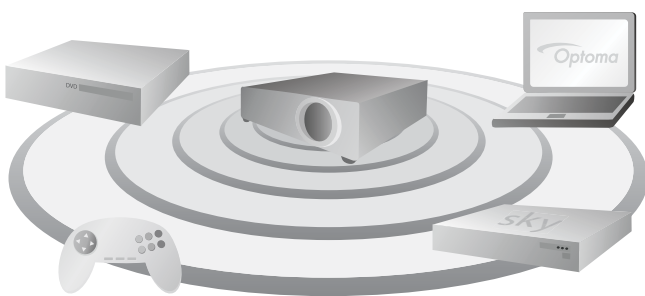
We are so confident that the ES521 image colour quality will remain as good as the day you bought it that Optoma will guarantee it for five years.



## GET CONNECTED

Easy to use with most of your home devices; simply connect, power up and project from:

- Satellite and cable Set top boxes
- Computers and laptops
- DVD players
- Games consoles
- Television recorders
- External speakers/Headphones



## VIRTUALLY MAINTENANCE FREE

The ES521 provides lower cost of ownership, longer life and improved reliability. The filter-free projector design does not require regular filter cleaning or filter replacement, saving you time and money.



## ENVIRONMENTALLY FRIENDLY

The ES521 incorporates energy saving features to conserve power and extend the lamp life:



To achieve the maximum 6000hrs<sup>2</sup> lamp life time the projector should be operating in ECO mode and the shut down timer should be enabled to automatically switch off the projector if it is accidentally left on when no longer required. Enabling the <1W Standby mode will ensure the minimum energy consumption when the projector is not being used.



It takes less than 10 seconds for the projector to power up and shutdown, saving both time and energy.

## FEATURES

- 6 preset display modes including Movie mode
- 4:3 and 16:9 widescreen
- Compatible with SCART signal
- Password protection for added security
- Ceiling mount the projector or project from a coffee table
- Easy to use remote with direct source control



We know that improving our products is the best way to reduce our impact on the environment. That's why at Optoma, we design our products to have a long usable life, use fewer materials, ship with the minimum packaging and be free of all possible toxic substances. Naturally, energy efficiency and being recyclable are built in at the design stage. With each new product, we strive towards minimising our environmental impact. For full details of Optoma Project Green please visit our website.



Enjoy big bright pictures in the office, classroom day or night

## ES521 SPECIFICATIONS

Native Resolution	SVGA 800 x 600	
Display Technology	0.55" SVGA DLP® chip, Technology by Texas Instruments	
Compatible Resolutions	UXGA, SXGA+, SXGA, WXGA, XGA, SVGA	
Brightness <sup>1</sup>	2700 ANSI Lumens	
Contrast Ratio	4500:1	
Lamp Life <sup>2</sup>	6000/5000 hours (ECO/BRIGHT mode)	
Noise Level	28dB (ECO mode)	
Weight / Dimensions (W x D x H)	2.3 kg / 286 x 192 x 84mm	
Inputs	15 Pin D-Sub VGA,	SCART via adaptor, Component via adaptor
	S-Video 4 Pin Mini Din	
	Composite RCA Jack	
Control	RS232 3 Pin mini-DIN	
Aspect Ratio	4:3 Native, 16:9 compatible	
On Screen Display	17 Languages: English, German, French, Italian, Spanish, Portuguese, Polish, Dutch, Russian, Finnish, Swedish, Greek, Norwegian/Danish, Hungarian, Czech, Turkish and Arabic	
Video Compatibility	PAL SECAM 625/576i/p, NTSC 525/480i/p HD 720p/1080i/p	
Uniformity	85%	
Zoom	1.1x Manual Zoom	
Projection Distance	1.2 – 12m	
Image Size	0.70 – 7.70m (27.49" – 303.12") Diagonal 4:3	
Keystone	±40° Vertical	
Operating Conditions Operating	5 - 35° C, 80% Humidity (Max), 3000m Altitude (Max)	
Power Supply	100 – 240V, 50 – 60Hz	
Power Consumption	233W BRIGHT mode < 1W Standby mode, 207W ECO mode < 1W Standby mode.	
Security	Kensington Lock Port, Password Protection	
In the BOX	Carry Bag, Power Cord, VGA Cable, UM CD, Quick Start Guide, Remote, Batteries	
RoHS	Compliant	
Lamp Warranty	6 months or 1000 hours – whichever comes sooner	
Warranty	Warranty will vary by country. Please see: <a href="http://www.optoma-europe.com">www.optoma-europe.com</a> or ask your local supplier for details	
Colour Guarantee <sup>3</sup>	5 Years	

## EASY TO USE REMOTE CONTROL

### ES521 Remote Control

- 1 Power
- 2 Vertical Keystone Correction
- 3 Volume Control
- 4 Brightness Adjustment
- 5 Digital Zoom
- 6 Contrast Adjustment
- 7 AV Mute
- 8 Freeze
- 9 Direct Input Source Selection



### ES521 Connections

- 10 RS232 - 3 Pin
- 11 VGA - SCART & Component
- 12 S-Video
- 13 Video
- 14 Kensington™ Lock

### Exceptional Connectivity / Multiple Terminals



### ES521 Distance Table Aspect Ratio 4:3

Projection Distance (m)	Max. Horizontal Image Size (m)	Min. Horizontal Image Size (m)	Max. Vertical Image Size (m)	Min. Vertical Image Size (m)	Max Diagonal Image Size (m)	Max Diagonal Image Size (inch)	Max. Image Offset (m)
1.20	0.62	0.56	0.46	0.42	0.77	30.31	0.07
2.00	1.03	0.93	0.77	0.70	1.28	50.52	0.12
2.50	1.28	1.16	0.96	0.87	1.60	63.15	0.14
3.00	1.54	1.40	1.16	1.05	1.92	75.78	0.17
4.00	2.05	1.86	1.54	1.40	2.57	101.04	0.23
5.00	2.56	2.33	1.93	1.75	3.21	126.30	0.29
6.00	3.08	2.79	2.31	2.10	3.85	151.56	0.35
7.00	3.59	3.26	2.70	2.45	4.49	176.82	0.40
8.00	4.10	3.72	3.08	2.80	5.13	202.08	0.46
9.00	4.62	4.19	3.47	3.15	5.77	227.34	0.52
10.00	5.13	4.65	3.86	3.50	6.42	252.60	0.58
11.00	5.64	5.12	4.24	3.85	7.06	277.86	0.64
12.00	6.15	5.58	4.63	4.20	7.70	303.12	0.69

For guide purposes only

**Optoma Europe Ltd.**  
42 Caxton Way, Watford Business Park, Watford, Hertfordshire, UK. WD18 8QZ  
[www.optoma.eu](http://www.optoma.eu)



<sup>1</sup>Brightness and lamp lifetime will vary depending on selected projector mode, environmental conditions and usage. As is common with all lamp based projectors, brightness will decrease over the lamp lifetime. <sup>2</sup>Typical lamp life achieved through testing. Will vary according to operational use and environmental conditions. <sup>3</sup>Optoma guarantees that in normal use, Optoma DLP® colour quality will be indistinguishable from when new. Exclusions: (a) Guarantee is voided if the projector is subject to damage through misuse. (b) Guarantee may be void in industrial or commercial entertainment environments where dust or smoke is excessive (c) Guarantee will not apply if lamp brightness is below 50% due to wear or if the projector is not working due to other faults. (d) Over time worn lamps within all projector types will show a slight colour variance. Copyright © 2012, Optoma Europe Ltd. All other product names and company names used herein are for identification purposes only and may be trademarks or registered trademarks of their respective owners. Errors and omissions excepted, all specifications are subject to change without notice. DLP®, BrilliantColor™ and the DLP logo are registered trademarks of TexasInstruments. Some images may be simulated. All images of products are for representation purposes only. Whilst every care is taken to provide accurate images of our products, actual products may differ slightly. Some product images may have been digitally altered by us to add an Optoma logo to the front panel. Optoma reserves the right to amend or alter actual product or product images without notice. Some images may be simulated.