

## Step 1 - How to Install the Upgrade Software

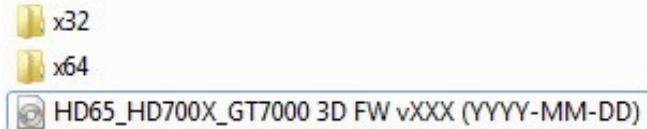
The installation must be done using a PC with USB port running Microsoft Windows XP or Vista (Windows 7 is not supported). Please note that the appearance of the installation may vary slightly depending on your version of windows. You will also need a standard “USB A-B” cable to connect your projector to your PC.

Please be aware that the download above includes two versions of the installer; a 32-bit and a 64-bit version. You must use the correct installation for your version of Windows. To find out whether you are running a 32-bit or a 64-bit version of windows please see the [Microsoft Knowledge Base article \(http://support.microsoft.com/kb/827218\)](http://support.microsoft.com/kb/827218) for more information.

1. Open “HD65 3D Upgrade.zip” from your chosen download folder and copy the “3D Upgrade” folder to your desktop.



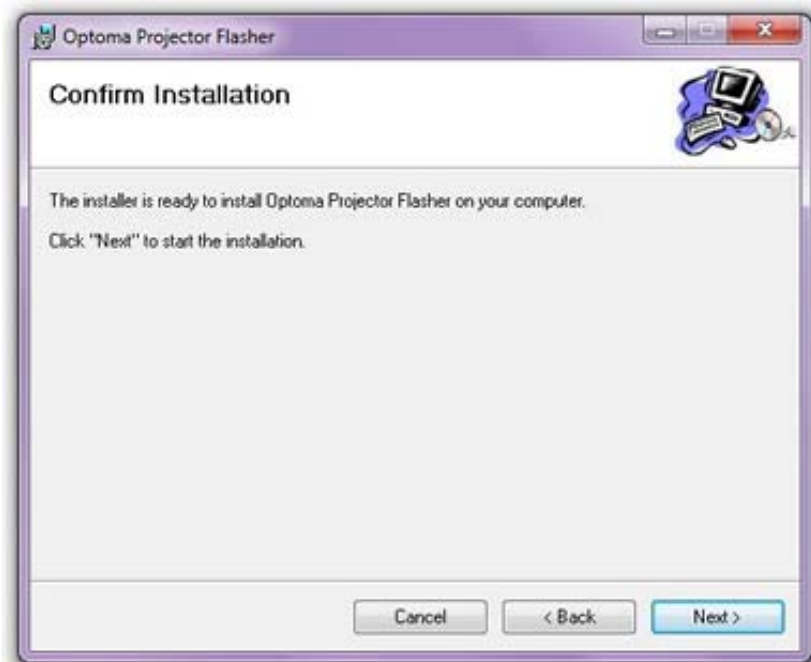
2. Open the “3D Upgrade” folder and select 32-bit or 64-bit (see link above regarding Windows versions)



3. Double click “Setup.exe” If windows asks if you want to allow the program to make changes to your computer, click “Yes”



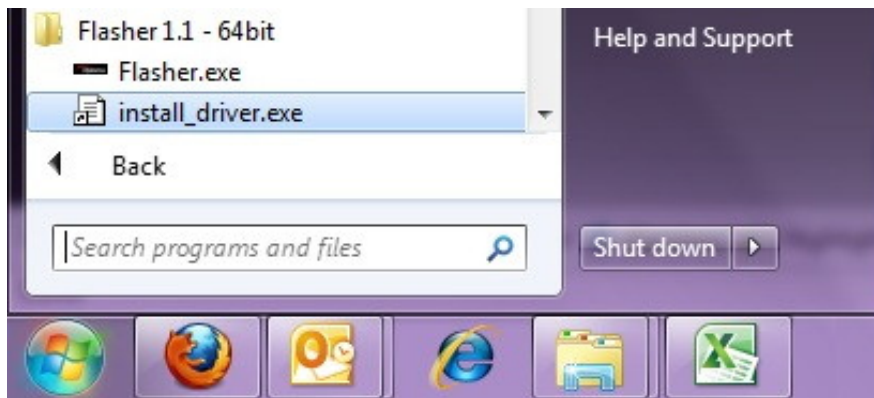
4. Click “Next”, “Next” and “Next” – the default values are suitable for most setups.



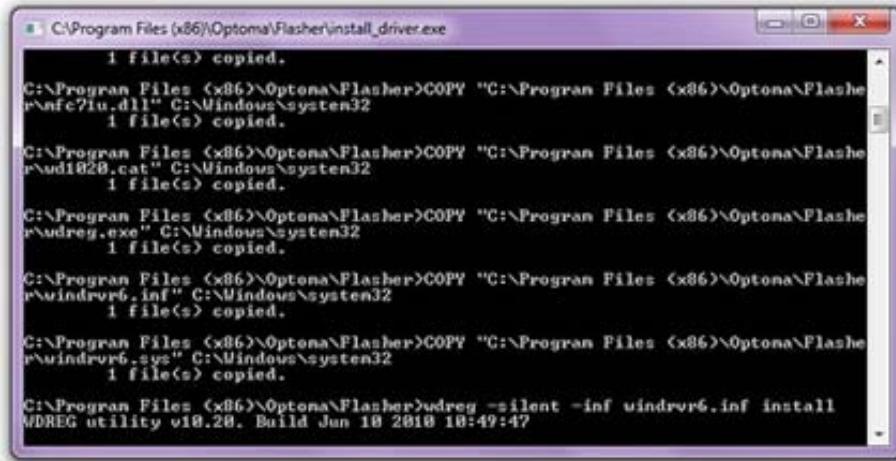
5. Click “Close” to exit the software installation.

**Before** running the upgrade program, you must install the USB driver.

6. Click on “Start”, (All programs) “Flasher 1.1” and select “install\_driver.exe”. If windows asks if you want to allow the program to make changes to your computer, click “Yes”



7. A DOS box will appear while the driver installs – it will close automatically.



8. If a dialogue box appears saying that the driver is not signed by Microsoft, click "Continue"

(To uninstall the upgrade software run "setup.exe" again and select "Remove")

## Step 2 - How to Upgrade Your Projector

Please ensure you have first installed the upgrade software as detailed in the previous section before attempting the upgrade.

1. Hold down the "Menu" button on your projector then plug in the power cord.



2. Once the lamp and temp LED light up, release the "Menu" button.



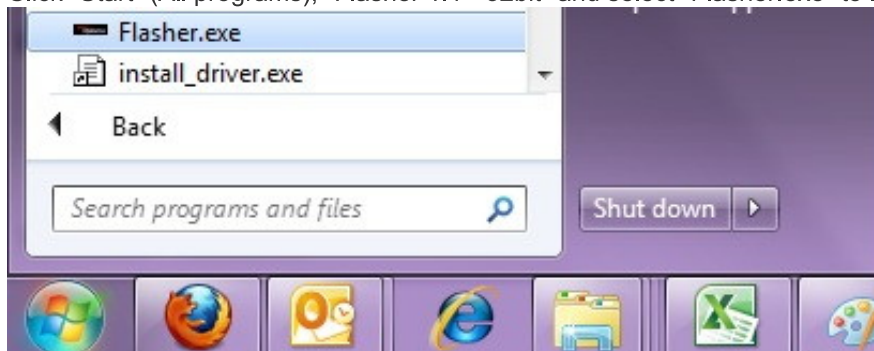
3. Plug in USB (A-B) cable into the projector's "Service" port and to the USB port of your PC.

If a balloon appears near the system tray saying "installing device driver software" wait until it says "your device is now installed and ready to use" before continuing.

\*Hint - Due to the varied implementation of USB on different PCs the USB device driver may not be found automatically. If your device driver is not found, please repeat items 6-8 in the previous section, ("How to install the upgrade software") while ensuring the USB cable is still connected and the lamp and temp LED are still lit.

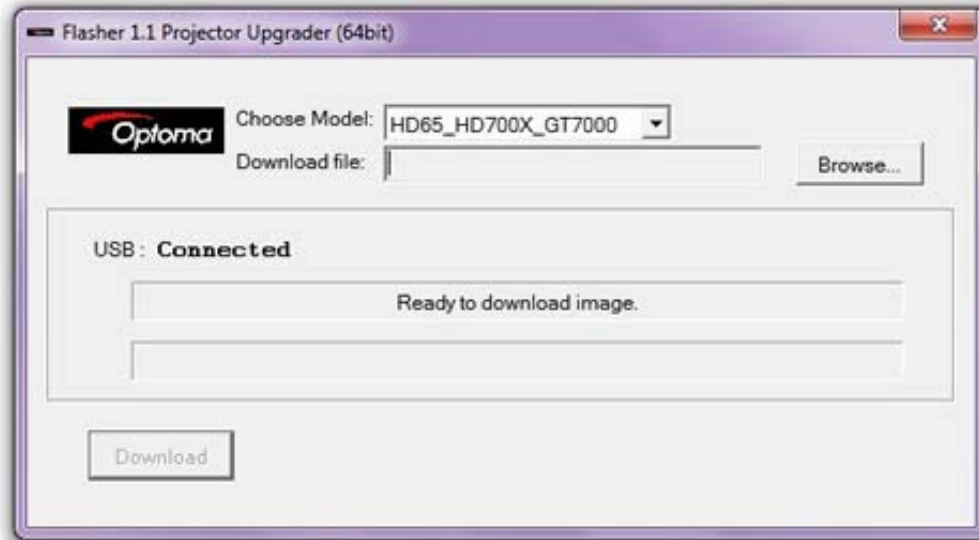


4. Click "Start" (All programs), "Flasher 1.1 - 32bit" and select "Flasher.exe" to launch the Upgrade software.

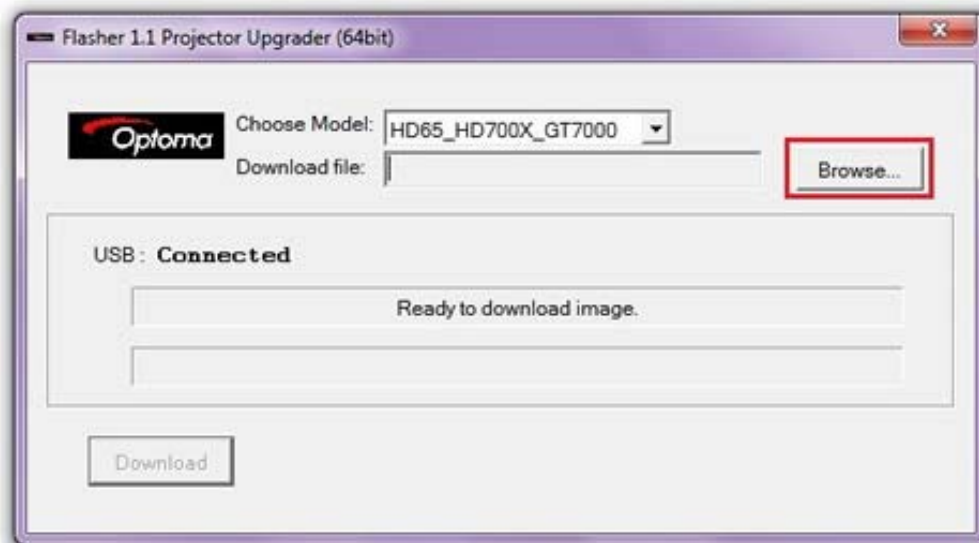


5. The "USB connection status" should say "Connected" (If it says "Disconnected" exit the software and go back to

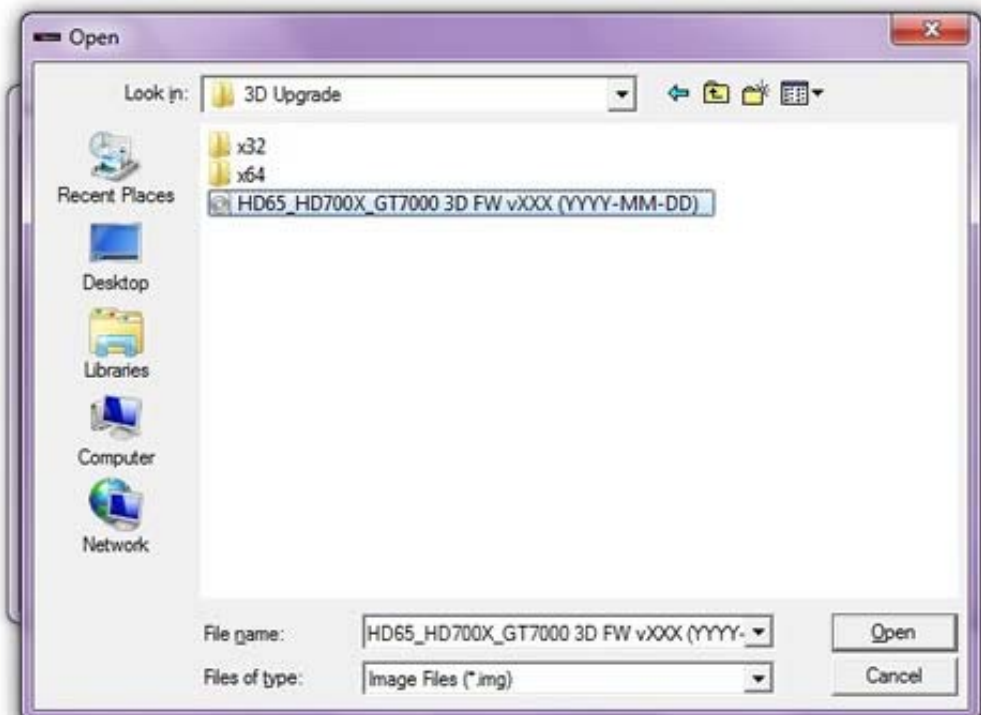
step 1 above to check the connectivity. If this does not work, try re-installing the software and USB driver)



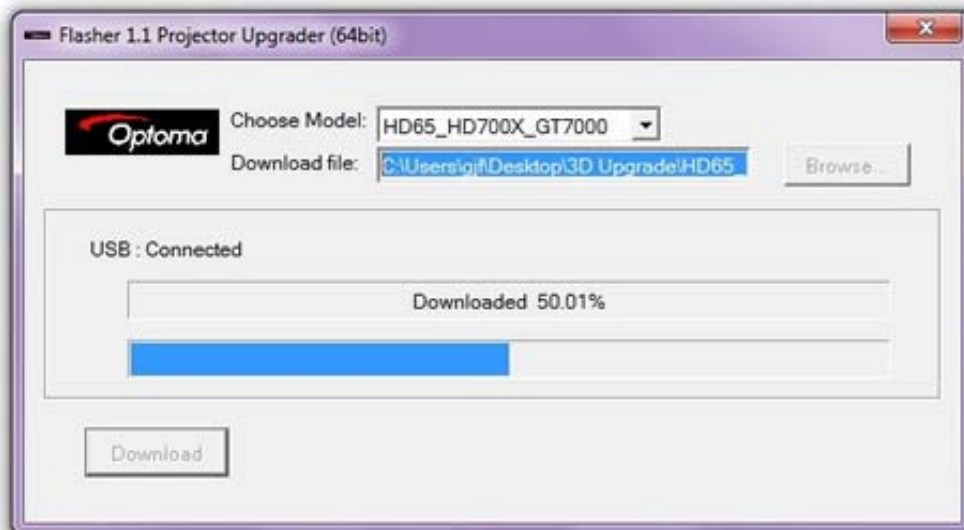
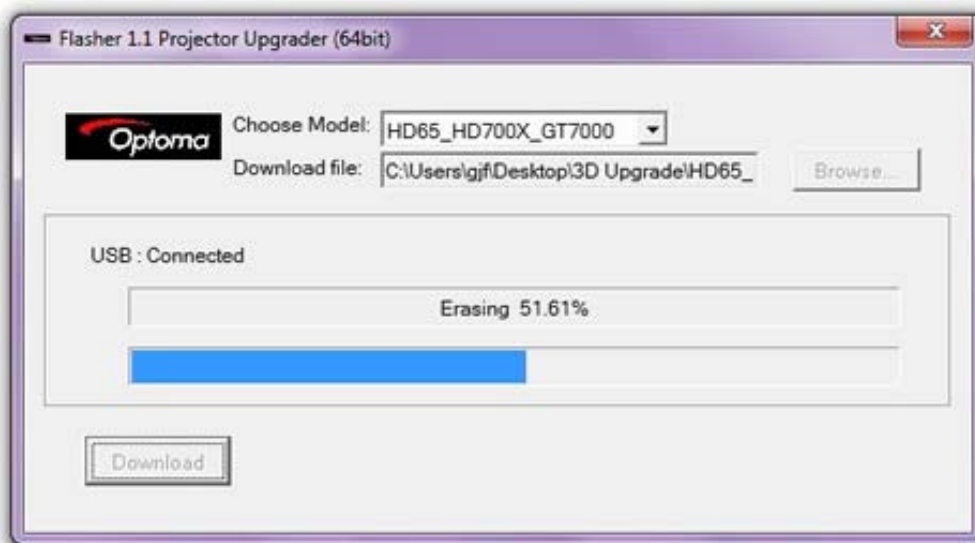
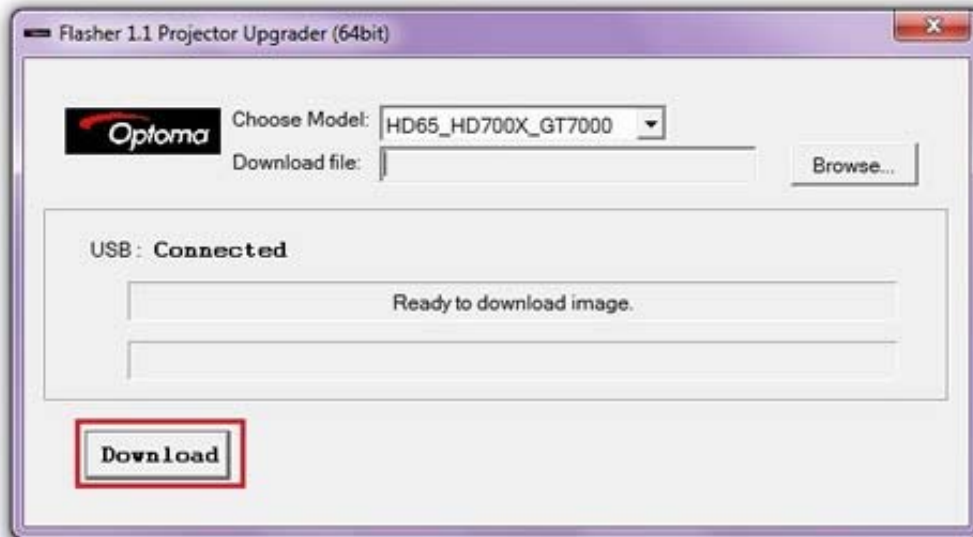
6. Click the “Browse” button to search for the Firmware image file.



7. Choose the image file called “HD65\_HD700X\_GT7000 3D FW vXXX(YYYY-DD-MM).img” from the “3D Upgrade” folder (On your desktop) and click “Open”

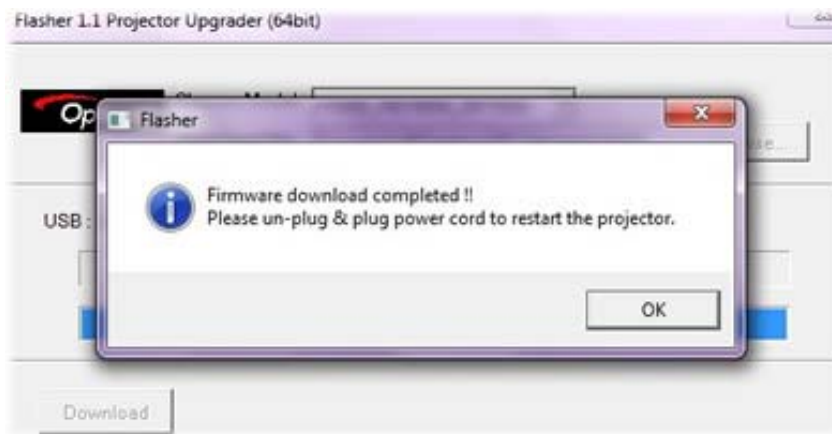


8. Click the “Download” button, then select “Yes” to start the upgrade – It will remove the old firmware, then upload the new firmware. The whole process will take a few minutes to complete.



NB: DO NOT UNPLUG THE USB OR POWER CABLE DURING THE UPGRADE - OPTOMA IS NOT RESPONSIBLE FOR ANY LOSS OR DAMAGED CAUSED BY DOING SO.

9. When the upgrade is complete, a dialogue box will appear to confirm the upgrade was successful. Click “OK” then unplug the USB and Power cables.



10. Your projector is now 3D-XL ready for fully immersive, huge-screen 3D at home! During 3D playback press "re-sync" on your projector remote control / keypad to Optimise your 3D viewing experience.